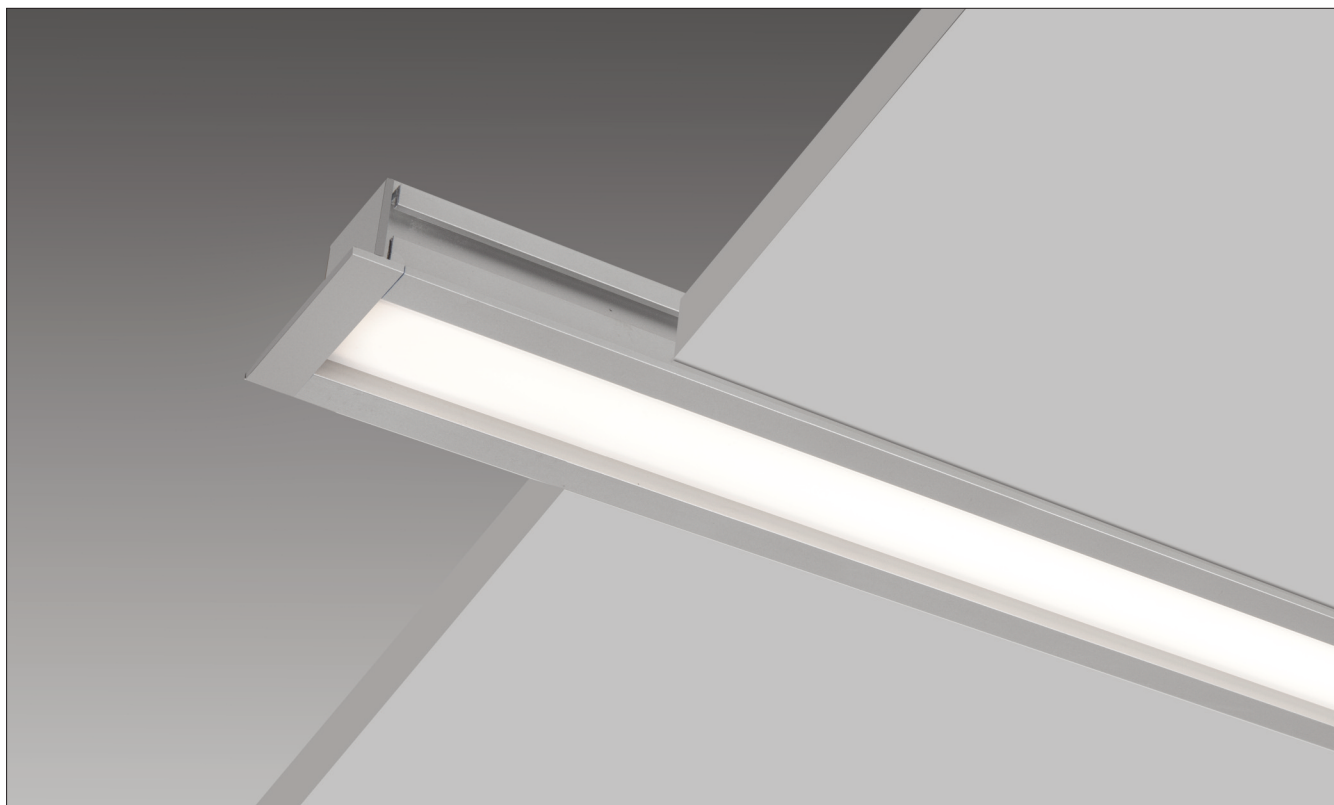


# LIGHTPLANE RECESSED 1 BURIED LENS LPLRT1B

Recessed



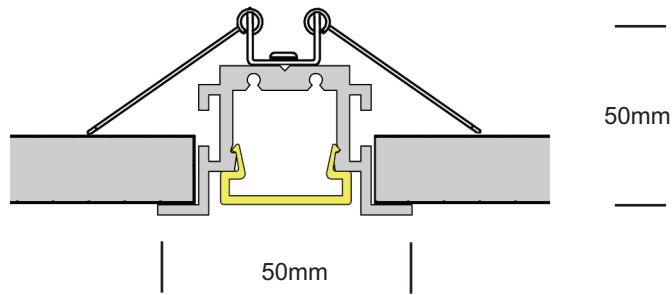
# LIGHTPLANE RECESSED 1 BURIED LENS LPLRT1B

Recessed with Trim

**LIGHT  
FORMS**

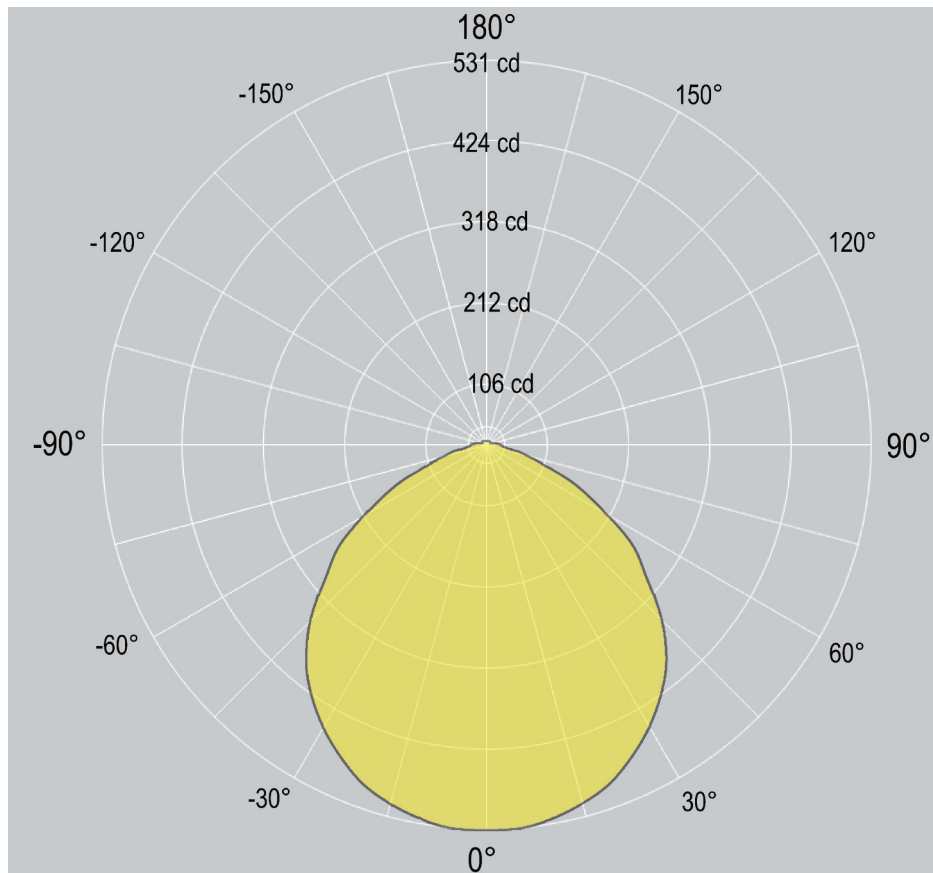
## Dimensions

---



## Distribution

---



# LIGHTPLANE RECESSED 1 BURIED LENS

## LPLRT1B

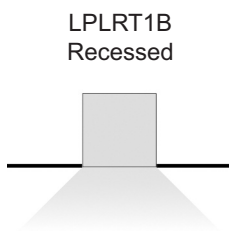
Recessed with Trim



### 1. Base Model

LPLRT1B

Recessed



### 2. Run Length

Enter total linear length, (example: 6M)

### 3. LED Lamping

STD - **xxxxK** (example: STD-4000K)

**Standard Output**, LED 20 W/M, 1400 delivered lm/M , 63 lm/W @ 4000K

HI - **xxxxK** (example: HI-4000K)

**High Output**, LED 30 W/M, 2100 delivered lm/M, 60 lm/W @ 4000K

CCT: 3000K 3500K 4000K Option: 2700K 5000K 5700K 6500K

CV - **xxxxK**

#### Additional LED Options

**Constant Voltage** (for custom lengths) - 12Vdc/24Vdc

Contact factory for detail

TW

**Tunable White (2700K - 6500K)**

Contact factory for detail

RGBW - **xxxxK**

**Standard Output - RGB+WHITE** - 12Vdc/24Vdc

Contact factory for detail

### 4. LED Driver (remote driver only)

0/1-10V

0/1-10V dimming

DALI

DALI dimming

DMX

DMX dimming

NONDIM

Non-dimmable

OTHER

(Consult factory for options)

### 5. Finish

AL

Standard, natural aluminum

BK

Black powdercoat

WH

White powdercoat

Custom

Custom Color

### 6. Additional options (remote only)

EM

1.5H Emergency Kit

MS

Motion sensor

Others

Contact factory for others

# LIGHTPLANE RECESSED 1 BURIED LENS LPLRT1B

Recessed with Trim

# LIGHT FORMS

---

## Housing

100% recyclable, extruded architectural grade T6063 aluminum

---

## Emergency

Luminaires can be wired for emergency circuit and/or emergency battery backup.  
Consult factory for options.

---

## Options

Mitered Corners

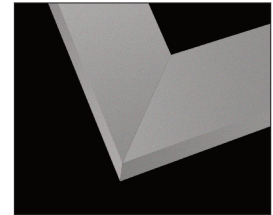
Consult factory for mitered corner angle options.

---

## Finish

Standard finish is "Ultimate" aluminum - a smooth, clean and durable finish achieved from a deep-etch and two step clear anodizing process.

White, Black, Custom powdercoat options also available.



Mitered Corners



WH - WHITE



AL - ALUMINUM



BK - BLACK



Custom/\_\_\_\_



CB



ISO 9001:2015

---

### China

Unit 3, Building A  
No. 9 Phoenix Road  
Torch Development Area  
Zhongshan City  
Guangdong China 528437

T +86 760 899 370 38  
F +86 760 899 370 39  
E ckirin@lightforms.com.cn

### UK

Unit 7C Boeing Way  
International Trading Estate  
Middlesex  
UB2 5LB

T +44 (0)20 8571 3785  
F +44 (0)20 8090 3755  
E ask@lightforms.com

### India

353/2 Dr Hira Singh Road  
Civil Lines  
Ludhiana 141001  
Punjab, India

T +91 98 7280 0488  
E ajay@lightforms.com

### Light Forms

Architectural Lighting  
www.lightforms.com

Registered in England  
No. 6750892  
Registered Address  
Unit 7C Boeing Way  
International Trading Centre  
Middlesex, UB2 5LB